

A REMARKABLE FLY FROM AN ANTS' NEST IN NEW ZEALAND
(DIPT., CHLOROPIDAE)

By J. T. SALMON, M.Sc.

(Dominion Museum, New Zealand.)

Communicated by Dr. W. R. B. OLIVER, F.R.E.S.

THE first specimen of the fly described herein was sent to me by Mr. W. E. Moore, of Christchurch, during February, 1938. Later, in the following April, in response to my request, Mr. Moore found and forwarded a further specimen. Both specimens came from the Mount Grey Valley, each from a separate nest of the ant *Monomorium integrum* Forel.

There seems to be little doubt that the fly actually inhabits the ants' nest. In a letter to me the collector states: "The first specimen was taken in the

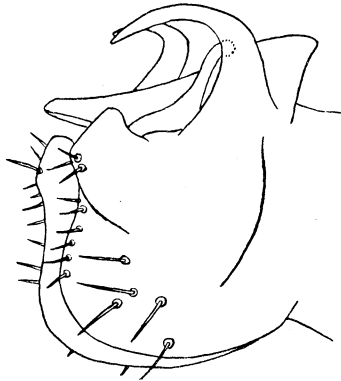


FIG. 1.—View of hypopygium from side and slightly to the rear.

middle of a large number of *Monomorium integrum*." Concerning the collecting of the second specimen he says: "On finding the nest I cut round it with a knife and lifted it entire, with as little superfluous turf as possible. The fly must have been in the nest or its immediate surroundings."

I take this opportunity to acknowledge valuable help given to me in the placing of this fly by Mr. A. L. Tonnoir, of the Division of Economic Entomology, Australian Council of Scientific and Industrial Research, Canberra.

The fly is most conveniently placed in the CHLOROPIDAE, and falls into the sub-family OSCINELLINAE. It does not, however, fall naturally into any known genus; and I propose to erect a new genus *Apterosoma* for its reception.

***Apterosoma* gen. n.**

This genus, on account of its sub-apterous condition and well-developed head chaetotaxy, might be related to *Apteroscimis* Mall., on the one hand, and to *Lasiosina* Beck. on the other. It differs, however, from these in the absence of both the mesonotal furrows and the sensory area on the hind tibia.

Genotype : the following species :—

***Apterosoma moorei* sp. n.**

Male. The general colour ochreous yellow, frontal triangle shining dark-ochreous, ocellar triangle slightly darker. Mesonotum with prominent dark-brown stripe tapering posteriorly and two broken, irregular stripes one on each side extending on to the margin of the scutellum. Abdomen, ochreous yellow, free of markings. Legs ochreous yellow. Eyes brick-red. Wings rudimentary and very small, hyaline. Halteres extremely small and reddish-brown. Body and legs evenly clothed with bristles, all bristles dark brown. Arista of antennae finely pubescent and dark brown in colour. Hypopygium small but its various parts well developed, the claspers and unci particularly so. (See fig. 1.) Length of body 1.5 mm.

Chaetotaxy of head. One inner and one outer vertical bristle to each side, two post-verticals, two ocellar, two large and four small fronto-orbital to each side. Numerous irregular small frontal bristles. Facial, vibrissal, and postorbital all absent.

Chaetotaxy of thorax. Two humeral, two notopleural, two supraalar, one intraalar, four scutellar, four irregularly-defined rows of small dorso-central and acrostical. All others absent. There are four large strong bristles arising from the costa of each wing rudiment around its base.

Holotype and paratype, male, in the Dominion Museum, New Zealand. Female unknown.